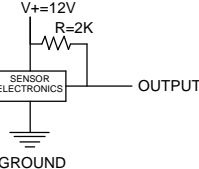


BAR CODE VIEW

RED (V+) REF  
GREEN (OUTPUT) REF  
BLACK (GND) REF

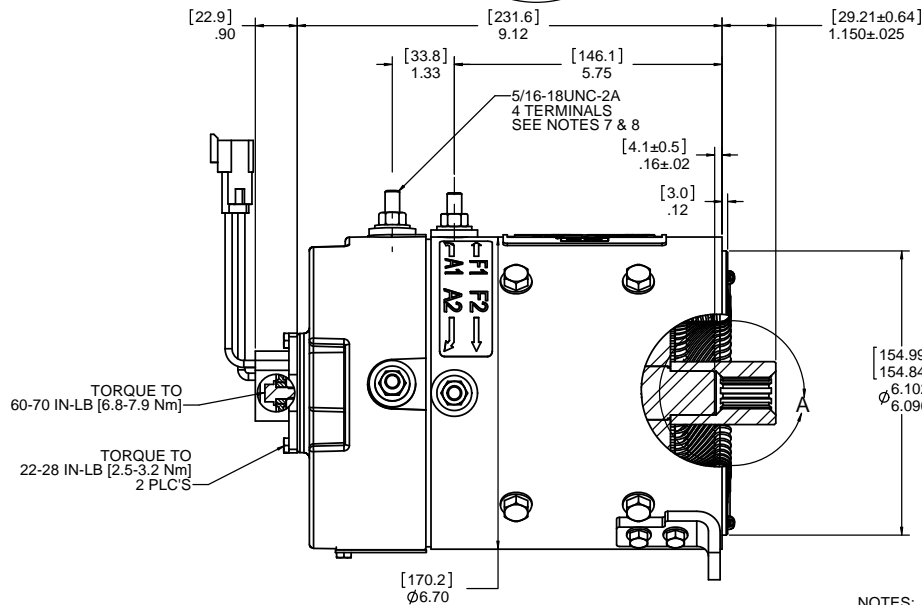
IDENTIFICATION NOTES:

1. NAME LABEL STAMPED WITH CLUB CAR PART No. 102705001, ADVANCED MOTORS & DRIVES PART No. EJ4-4001, BAR CODE, AND 48 VOLT
2. U.L. ID No "AU2500 3.3 H.P." STAMPED ON RATING LINE OF NAME LABEL
3. DATE CODE STAMPED ON FRAME NEAR NAME LABEL



SPEED SENSOR NOTES:

1. CONNECTOR: DEUTSCH DT04-3P
2. OPERATING VOLTAGE: 4.5 TO 24 VOLTS
3. OPERATING TEMPERATURE: -20C TO +85C
4. CURRENT SINKING UP TO 25 mA
5. AN EXTERNAL OUTPUT PULL UP RESISTOR IS REQUIRED
6. CONNECTOR & WIRES APPROXIMATELY 5.5[140] LONG
7. SENSOR IS DESIGNED TO OPERATE WITH A 1302M008 MAGNET WITH 4 N/S POLEPAIRS. THE OPERATIONAL DISTANCE BETWEEN THE MAGNET AND THE HOUSING INCLUDING ANY RUNOUT SHOULD NOT EXCEED .030[0.76]

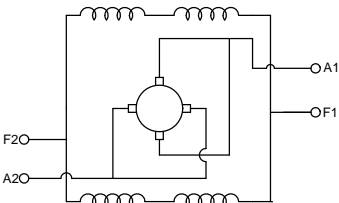


TORQUE TO  
60-70 IN-LB [6.8-7.9 Nm]

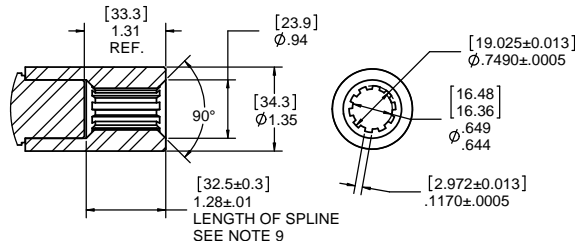
TORQUE TO  
22-28 IN-LB [2.5-3.2 Nm]  
2 PLC'S

ROTATION - REVERSIBLE  
C.W.D.E.

CONNECT A2 AND F2 TO ONE BATTERY TERMINAL  
CONNECT A1 AND F1 TO OTHER BATTERY TERMINAL  
C.C.W.D.E.  
CONNECT A2 AND F1 TO ONE BATTERY TERMINAL  
CONNECT A1 AND F2 TO OTHER BATTERY TERMINAL



WIRING DIAGRAM

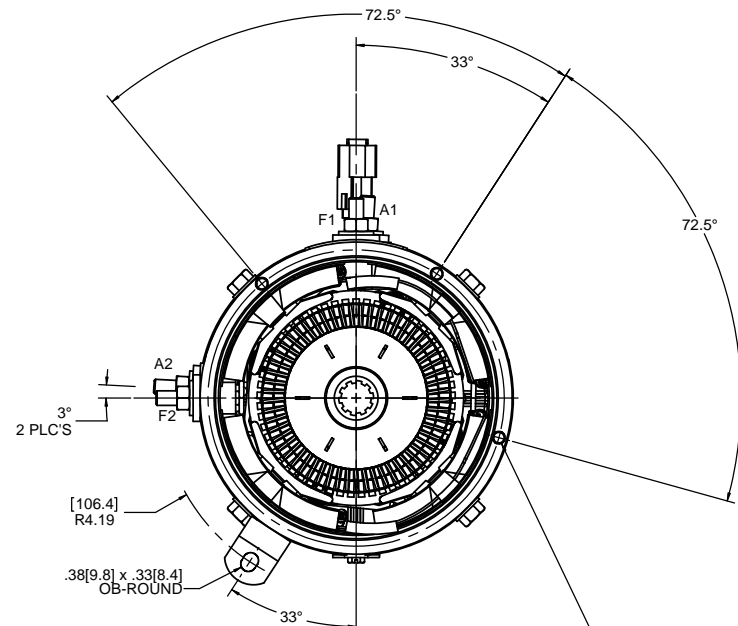


10 TOOTH  
INTERNAL SPLINE

DETAIL A  
SCALE 1 : 1

NOTES:

1. TEST TO CURVE C-400
2. MOTOR SPECIFICATION: SC-400
3. CLASS "H" INSULATION
4. DESIGNED WITH INTENT TO MEET U.L. SPEC No. 583 LATEST EDITION FOR TYPE "E" AND "EE" INDUSTRIAL ELECTRIC TRUCKS
5. FINISH: FRAME- BLACK PAINT, END HEAD - NATURAL ALUMINUM
6. MOTOR WEIGHT: 49 LB[22.2 kg]
7. SECURE BOTTOM NUT WITH WRENCH PRIOR TO APPLYING TORQUE TO TOP NUT
8. TORQUE TO 90-110 IN-LB [10.2-12.4]
9. SPLINE TEETH HARDENED TO Rc 43 MIN. AT DEPTH .008[0.20]. SURFACE HARDNESS TO BE Rc 50 MIN.



48 VOLT

F	EC-5448	UPDATED LABEL & MODEL NUMBER	JLS	5/26/2009
E	PCR-5202	ADD TORQUE CALLOUT	PJH	10/6/2008
		REDRAWN IN SW; LAST REV D	PJH	10-06-08
Rev.	PCR No.	Change Description	By	Date

This print is the property of Advanced Motors & Drives and is issued in confidence for engineering information only. This document shall not be used or disclosed without direct written permission from Advanced Motors & Drives.

Material:  
Reference: DL9-4001

OUTLINE DIMENSIONS  
ARE NOMINAL  
UNLESS TOLERANCES  
ARE SPECIFIED

[MILLIMETERS]  
INCHES  
-OR-  
INCHES[MILLIMETERS]

PROJECTION  
THIRD ANGLE

ADVANCED MOTORS & DRIVES  
6268 EAST MOLLOY ROAD  
EAST SYRACUSE, NY, USA

Name:  
TRACTION MOTOR OUTLINE

Size	Scale	Drawn by	Date
D	3:4	MJG	1/13/2004

Part No.  
EJ4-4001

SW  
XP-1955  
SHEET 1 OF 1