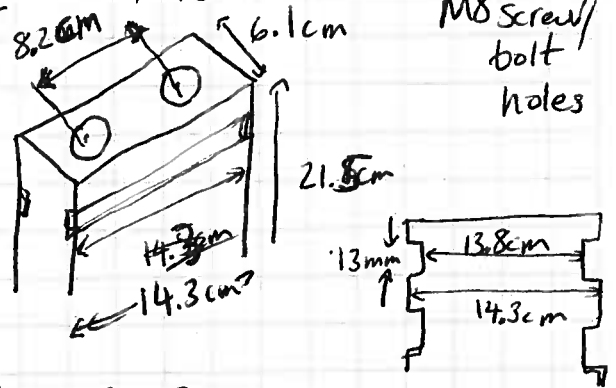


Wmead: 8G27 Deka Dominators $\rightarrow 640$ lbs
 [512 lbs in back]
 [320 lbs in front]

TS-90AHR dimensions

height: 21.5 cm (8.58")
 width: 14.3 cm (5.71")
 thickness: 6.1 cm (2.4")
 weight: 3.2 kg (7.05 lbs)



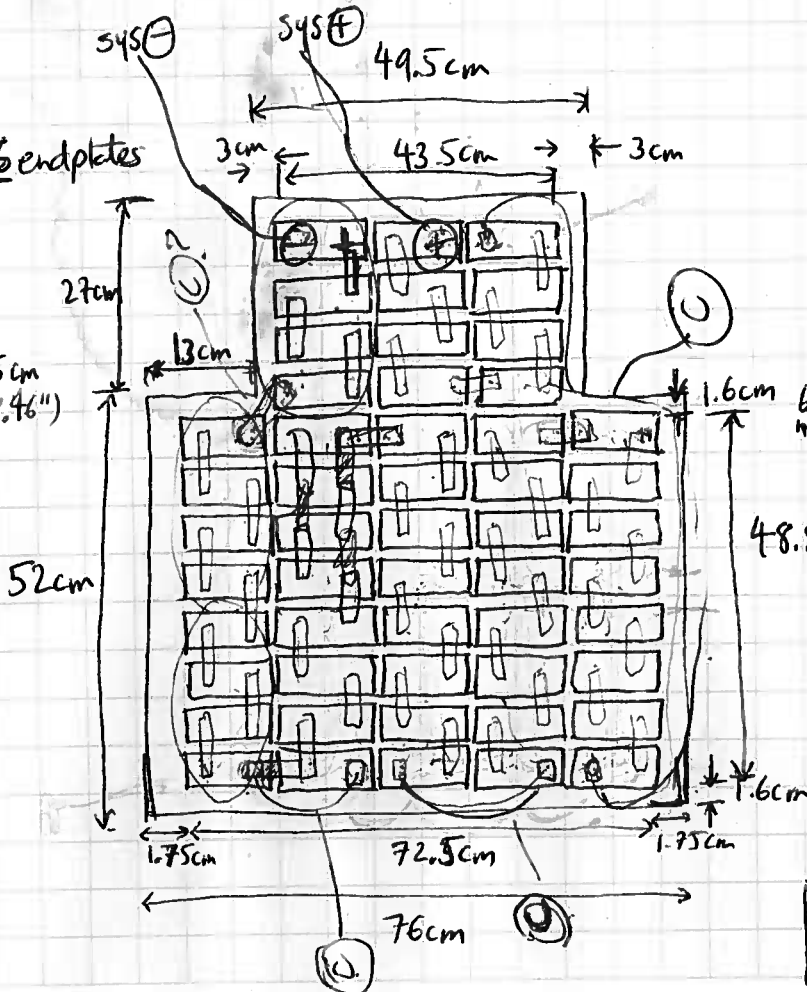
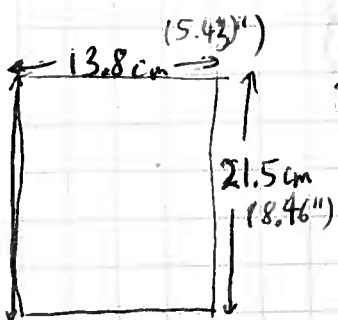
52 cells $\Rightarrow 166$ kg (366.6 lbs) ~~52~~ 52 x 90 Ahr x 3.2V
 52 x 3.2V $\Rightarrow 166.4$ V = 14,976 WHr
 52 x 3.6V $\Rightarrow 187$ V (charging) @ 80% depth of discharging
 52 x 3.7V $\Rightarrow 192.4$ V (maximum) $\Rightarrow 60$ miles at 200 WHr/mile

Arranged as 4×3.2 V = 12.8V nominal } 4 x 13 sets $\Rightarrow 52$ cells
 4×3.6 V = 14.4V charging }

Arranged as 13 sets of "12V" batteries
 Can use Paktrakr to monitor initially

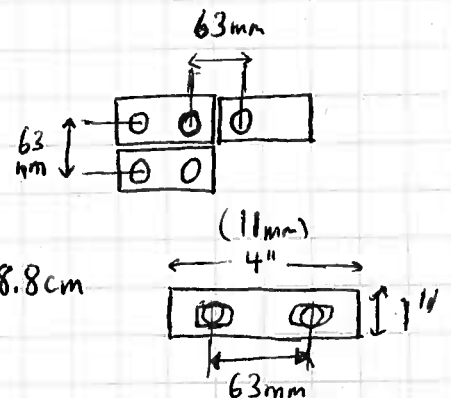
End-plates

13 sets x 2 $\Rightarrow 26$ endplates



Bus-bars

47 normal 4" bus bars needed



holes are for M8 bolts
 but make holes 9mm
 to allow for a little
 OR
 63mm play

